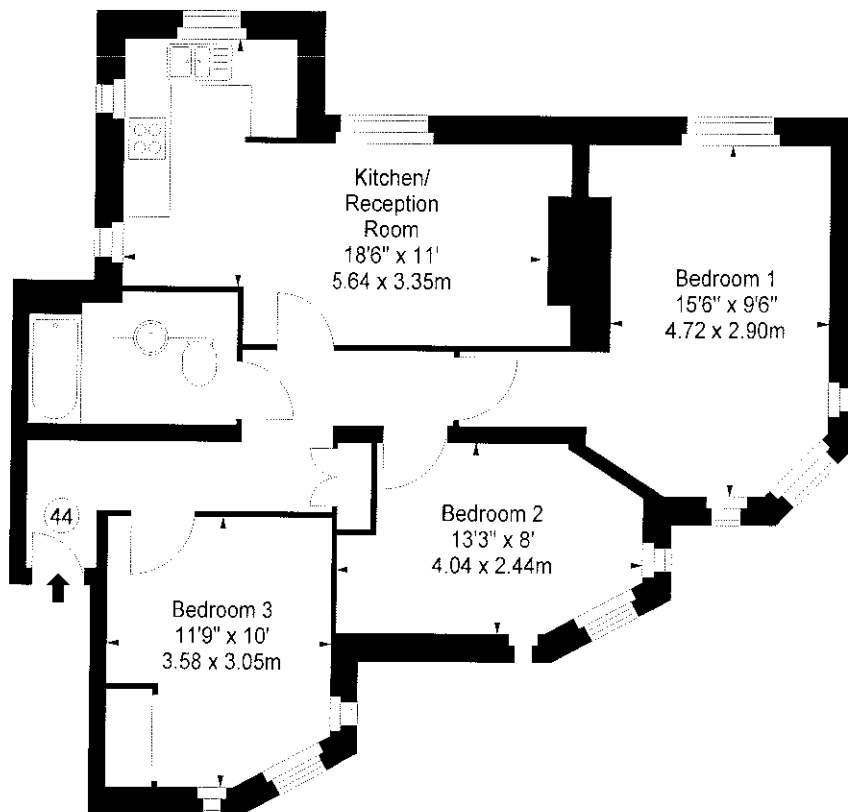


**Flat 44,
Kew Bridge Court, W4**

Approx. Gross Internal Area *
738 Ft² - 68.56 M²



Ground Floor

Illustration For Identification Purposes Only. Not to Scale

*** As Defined by RICS - Code of Measuring Practice**

BKR
FLOORPLANS

(OFFICES THROUGHOUT THE UK)

**T: 0845 257 2023
WWW.BKRFLOORPLANS.CO.UK
2007**